



Risk Management Solutions



Spring 2016

A Quarterly Newsletter of the AMIC/MWCF Loss Control Division

Use of Drones in Law Enforcement

Terry Sanders • Police Safety Consultant • AMIC/MWCF

Unmanned aerial vehicles (UAV), commonly known as drones, are being integrated into law enforcement around the country. Agencies in Alabama are beginning to use UAVs to enhance their operations. If properly used, this technology is an excellent tool for law enforcement.

In 2015 Governor Bentley implemented the ALABAMA UNMANNED AERIAL SYSTEMS (UAS) Task Force to address issues regarding unmanned aerial flights. This task force represents all stakeholders across the state including first responders. According to its mission statement, the task force will recommend a statewide plan for use of UAVs by the State of Alabama to include recommendations of proposed legislation. More information on this task force can be found online at www.alabamauastaskforce.org.

Current uses for law enforcement UAVs include:

- Security surveillance for sporting and other highly attended public events.
- Aerial photographing of vehicle accidents and crime scenes.
- Added security for executing high risk search and arrest warrants.
- Search aid for missing persons.

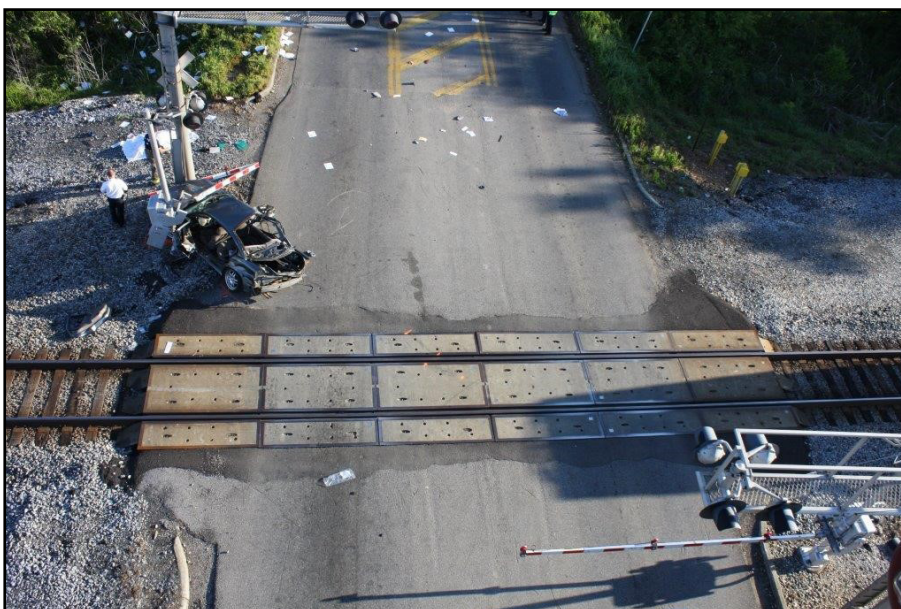


Photos provided by Oxford Police Department

Above: Drone used by Oxford Police Department.

Below: Drone photo of crash scene, Oxford, AL.

Next page: Drone photo of crash scene, Oxford, AL.



With the use of drones, police can now search an entire area near the home of a missing person within a short time span. This tool is invaluable to first responders when searching for small children and Alzheimer's patients. While a number of practical usages exist for this equipment when properly employed, agencies must realize that the use of UAVs in law enforcement is relatively new and brings with it certain legal considerations.

The potential for privacy abuses from aerial surveillance has caused some agencies in other states to abandon their plans to use this technology. Agencies choosing to adopt this equipment should only do so after implementing strict policy governing its use. This policy should clearly state that **all** UAV operators must undergo necessary training covering all aspects of UAV usage and that no person can operate a drone without proper training. This training must cover all federal, state and local laws governing the

continued next page

Drones continued from cover

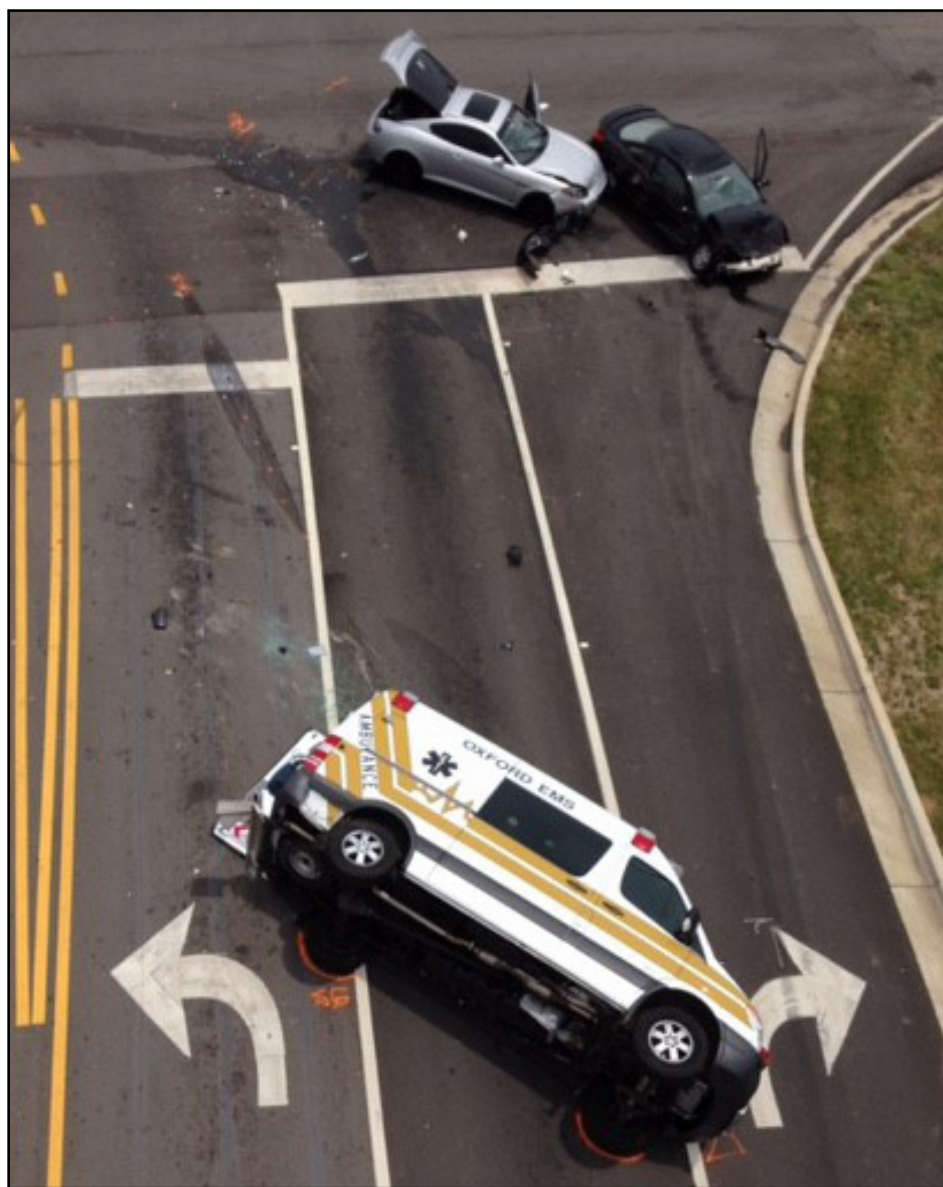
use of UAVs as well as constitutional mandates relating to search and seizure. This written policy should further state that only *departmental approved* UAVs will be used and with no exception will personal equipment of any kind be used. The policy must also conform to all state laws regarding the storage of digital data.

The International Association of Chiefs of Police (IACP) has issued excellent written guidelines concerning the use of UAVs in law enforcement. This guideline can be accessed through the IACP website at www.theiacp.org. The IACP encourages community engagement prior to implementing an Unmanned Aerial Vehicle program and recommends agencies reassure their communities that the protections afforded citizens through the U.S. Constitution will be fully adhered to in all operations of this equipment.

Police agencies that elect to use UAVs should first regulate how they will be used. Agencies must also consider the costs versus the overall benefits to be gained. Another such consideration concerning cost versus benefit involves the municipality's Law Enforcement Liability coverage. Agencies should check with their liability insurance carriers to determine if restrictions apply for this type coverage.

One Alabama law enforcement agency successfully using UAVs is the Oxford Police Department. According to Chief Bill Partridge, their unmanned aerial reconnaissance program has been very successful. "We began using Aerial Platforms (Drones) in 2013," he said. "They have been a huge asset to patrol and investigations – especially in crime scene and traffic homicide photography."

An Unmanned Aerial Vehicle program combined with proper training, a well written policy and approved equipment can be a tremendous asset to law enforcement agencies as they serve and protect their communities. ■



Defining Moment

Handling a Claim – Dos and Don'ts

When handling a claim, it is always critical for municipalities to proceed carefully. Below is a list of some of the important things to remember when you have an incident, injury or other loss. **Please advise the AMIC claims office of all incidents and/or events.**

DO:

- Call AMIC immediately! Take pictures of the damage!
- Take pictures of the incident site!
- Complete an incident report!
- List witnesses and parties involved!
- File police report (if necessary)!

DON'T

- Admit liability or pay for a claim yourself!
- Put off filing a claim!
- Disturb/alter the incident site!
- Discuss confidential claims!
- Make promises to claimants!
- Forget to file required forms!
- Take threats of claims lightly!

Remember: you can call toll-free even if you only have a question: 1-866-239-AMIC.

Loss Control Services

The Loss Control Division has 11 dedicated staff members and offers a variety of services. Four loss control representatives are assigned to different regions throughout the state. We are continuously adding to our website and refining our services.

- On-site Risk Management with follow-up reports and recommendations
- Specialized law enforcement risk control
- Annual state-wide loss control seminars
- Loss analysis and trending
- *Risk Management Solutions*, free quarterly newsletter
- Employment Practices Law Hotline
- Proactive Driver Training (SkidCar)
- Firearms Training System (FATS)
- Safety DVD library
- Comprehensive loss control website
- Online training
- Fire extinguisher training

www.losscontrol.org

2015 Risk Management Awards

In recognition of the efforts and successes of our members, the AMIC and MWCF Board of Directors established the Risk Management Awards system in 2002.

Awards are determined based on the loss ratios for each member's prior year. For members of both the AMIC and MWCF programs, the loss ratios are combined and divided by two to reflect the overall loss ratio. Members are eligible to receive the Presidents Award once every five years and the Gold, Silver and Bronze annually.

ALM President's Awards (Top 5% for 5 years)

Aliceville
Anniston Public Library
Bessemer Government Utility Services
Blackbelt Energy
Brent Utilities
Carrollton
Clayhatchee
Collinsville
Cuba
Decatur Municipal Utility Board
Dozier
Eutaw
Fayette Water Works Board
Five Star Water Supply District, Inc.
Foley Public Facilities
Gantt
Geneva Water Works and Sewer Board
Glencoe Water & Sewer
Greenville YMCA
Gurley
Hartselle Housing Authority
HyTop
Kinsey
Luverne Housing Authority
Magnolia Springs Public Library
Muscle Shoals Electric Board
North Alabama Gas District
North Baldwin Utilities
Odenville
Rainbow City Utilities Board
Rehobeth
Steele Waterworks Board
Tallasse Industrial Development Board
Tallasse Redevelopment Authority
Thomasville Waterworks & Sewer
Toxey
Trinity
Troy Board of Education
Tuscumbia Utilities Department
West Blocton
West Pace Village Cooperative District
West Pace Village Improvement District
Wetumpka Water & Sewer

Gold Awards (Loss ratio below 5%)

Abbeville Fire & Rescue
Abbeville Water & Sewer
Addison
Alabama Municipal Electric Authority
Alabama-Tombigbee Regional Commission
Albertville Utilities
Alexander City
Aliceville Governmental Utilities Services Corp

Aliceville Housing Authority
Aliceville Water Works & Sewer Board
Allgood
Anderson
Anniston Public Library
Arab Sewer
Arab Water Works Board
Ardmore
Ardmore Water & Sewer
Argo
Arley
Asbury Water Authority
Ashford
Ashford Housing Authority
Ashland Water Works & Sewer Board
Ashville Water & Sewer Board
Atmore Housing Authority
Attalla Water Works
Auburn Water Board
Autaugaville
B.B. Comer Memorial Library
Babbie
Baileyton
Baker Hill
Banks
Bay Minette Housing Authority
Bear Creek
Beatrice
Beaverton
Belk
Benton
Berry
Bessemer Airport Authority
Bessemer Public Library
Beulah Utilities District
Billingsley
Birmingham Regional Planning Commission General Fund
Black Warrior Solid Waste Authority
Blackbelt Energy
Blount Co Oneonta Agri-Business Center
Blountsville Housing Authority
Blountsville Utilities
Blue Springs
Boaz Gas Board
Boaz Water & Sewer Board
Boligee
Brantley
Brantley Housing Authority
Brent
Brent Housing Authority
Brent Utilities
Brewton Housing Authority
Bridgeport Housing Authority
Bridgeport Utility Board
Brighton
Brookside
Butler Utilities
Cahaba Valley Fire & Med Rescue District
Calera Housing Authority
Calera Waterworks
Calhoun County 911
Carbon Hill
Carbon Hill Housing Authority
Carrollton
Cedar Bluff Utility Board
Central Alabama Regional Planning Commission
Centre
Centreville
Centreville Water Works & Sewer Board
Chatom
Chelsea
Cherokee County Water Authority
Cherokee Waterworks & Gas Board
Chickasaw Housing Authority

Chickasaw Utilities
Chilton County Solid Waste Dis.
Citronelle Historical Preservation
Clanton Housing Authority
Clay Co. Emergency Rescue Squad
Clayhatchee
Clayton Housing Authority
Clayton Water & Sewer
Cleveland
Clio
Coker
Coker Water Authority
Colbert County Animal
Collinsville
Colony
Columbia
Columbiana Waterworks
Community Life Institute
Coosa Valley Water Supply
Cottonwood Housing Authority
County Line
Courtland
Cowarts
Craig Field Airport Authority
Crossville Water Works Board
Cuba
Cullman Utilities
Cumberland Mountain Water
Cusseta
Dadeville Gas Board
Dadeville Housing Authority
Dadeville Water & Sewer
Daleville City Board of Education
Daleville Housing Authority
Dallas County Water & Sewer
Deatsville
Deatsville VFD, Inc.
Decatur Municipal Utility Board
Decatur Personnel Board
DeKalb-Cherokee Co. Gas District
Demopolis Water & Sewer Board
Detroit
Dodge City
Dora
Dora Water & Gas Board
Dothan
Double Springs
Double Springs Waterworks Board
Douglas
Douglas Water & FPA
Dozier
Dutton
East Geneva Co. Senior Citizens Committee
Eclectic
Elba Water & Electric Board
Eldridge
Electric Cities of Alabama
Elkmont
Elmore County Economic Development Authority
Elmore Water Authority
Emelle
Enterprise Rescue
Eufaula Housing Authority
Eutaw
Eutaw Housing Authority
Evergreen Housing Authority
Excel
Facility Committee Inc. & Jackson Swim Team
Fairview
Faunsdale
Fayette Gas Board
Fayette Water Works Board
Five Points
Five Star Water District
Flomaton

Floral Housing Authority
Foley Public Athletic & Sports Facilities
Foley Public Facilities
Forestdale Fire District
Fort Deposit Water Works & Sewer Board
Fort Payne Improvement Auth.
Fort Payne Waterworks Board
Frisco City
Fruithurst Fire Department
Fulton
Fulton Utilities
Fyffe
Gainesville
Gainesville VFD
Gantt
Geiger
Geneva Water Works/Sewer Bd.
Georgiana Housing Authority
Georgiana Water & Sewer
Geraldine
Gilbertown Utility
Glen Allen
Glencoe
Glencoe Water & Sewer
Glenwood
Goldville
Good Hope
Goodwater Waterworks & Sewer Board
Gordo
Gordo Water Board
Government Utility Services
Greene County Ambulance Service
Greensboro
Greenville Water Works & Sewer Board
Greenville YMCA
Guntersville Electric Board
Guntersville Housing Authority
Guntersville Water/Sewer Board
Hammondville
Hanceville Housing Authority
Hanceville Water Works
Harpersville Water Board
Hartselle Housing Authority
Hartselle Utilities
Headland Housing Authority
Heath
Heflin Water & Sewer
Helena
Henagar
Hobson City
Hobson City Housing Authority
Hokes Bluff
Hokes Bluff Water Board
Holly Pond
Horizons Improvement District
Huguley Water & Fire Protection Authority
Huntsville Housing Authority
Huntsville Tennis Center Board of Control
Huntsville-Madison County Airport
Hurtsboro
Hurtsboro Water Works
HyTop
Indian Springs
Jackson
Jackson Water & Sewer Board
Jacksons' Gap
Jackson's Gap Water Authority
Jefferson County 911
Kansas
Kellyton
Kennedy
Kinsey
Kinston

LaFayette
Lamar County Gas District
Langston
Leighton
Leighton Water Works/Sewer Bd.
Lexington
Linden
Linden Housing Authority
Linden Utilities
Lineville Water & Sewer
Lisman
Littleville
Livingston
Loachapoka
Lockhart
Louisville
Lowndesboro
Luverne Housing Authority
Madrid
Magnolia Springs
Magnolia Springs Public Library
Malvern
Maplesville Utilities
Marshall County Gas
Maytown
McIntosh
McIntosh Water & Fire Protection
McKenzie
Mentone
Mentone Waterworks Board
Midland City
Midway
Millerville Water Authority
Millry
Minor Heights Fire District
Mobile County Emergency Management Agency
Mobile County Personnel Board
Mobile Development Enterprise
Moody Utilities
Mooresville
Moulton Housing Authority
Mulga
Muscle Shoals Electric Board
Myrtlewood
Napier Field
Natural Bridge
Nauvoo
Nauvoo Waterworks
Nectar
Needham
New Brockton
New Brockton Water/Sewer Bd.
New London Water and Sewer & Fire Protection
Newbern
Newton Housing Authority
Newton Water & Sewer
Newville
North Baldwin Utilities
North Courtland
North Shelby Fire/Emergency Medical Rescue District
Northeast Alabama Agri Business Center
Northeast Alabama Gas Cooperative District
Northwest St. Clair County Water
Oak Grove
Oak Hill
Oakman
Odenville
Opp Housing Authority
Orange Beach Public Library
Orrville
Owens Cross Roads
Ozark Board of Education
Ozark Dale Co, E-911
Ozark Dale County Economic Development Corporation
Ozark Housing Community

Ozark Utilities
Paint Rock
Parrish
Pell City Housing Authority
Pennington Utilities
Perdido Beach
Phenix City Utilities
Phil Campbell Housing Authority
Phil Campbell Water & Sewer Board
Pickens County Gas
Pickensville
Pinckard
Pine Apple
Pinson
Pisgah
Pleasant Groves
Pollard
Prattville Historic Redevelopment Authority
Prattville Solid Waste Authority
Prattville Waterworks
Providence
Quint Mar Water Authority
Ragland Water Works Board
Rainbow City Utilities Board
Ranburne
Ranburne Water & Sewer
Red Bay Water & Gas
Red Level
Reece City
Reform Housing Authority
Reform Water & Sewer Board
Rehobeth
Renaissance Cooperative District
Renaissance Improvement District
Repton
River Falls
Riverside
Riverview
Rockford
Rockford Gas Board
Rockford Volunteer Fire Department
Rockford Waterworks
Rogersville
Rogersville Waterworks & Sewer
Russellville Electric Board
Russellville Gas Board
Russellville Housing Authority
Russellville Water Works & Sewer
Rutledge
Saint Florian
Sand Rock
Sanford
Saraland
Sardis City
Sardis City Waterworks Board
Satsuma Water Works & Sewer Board
Scottsboro Public Library
Section
Section Dutton Waterworks
Shiloh
Silas
Silverhill
Slocomb
Slocomb Housing Authority
Slocomb Water & Sewer
Somerville
S. Alabama Regional Airport Authority
S. Central Alabama Development Co.
South Central Alabama Development Commission/ Senior Aides Division
South Vinemont
Southeast Alabama Solid Waste Disposal Authority
Southside Waterworks Board
Spanish Fort
Steele Waterworks Board
Stevenson
Stevenson Utilities

Storm Water Management Authority
Sulligent Housing Authority
Sumiton Gas Board
Sumiton Water Board
Susan Moore
Sweet Water
Sweet Water Waterworks
Sylacauga Parks & Recreation
Sylacauga Utilities
Sylvan Springs
Sylvania
Talladega Springs
Tallasse Industrial Development Board
Tallasse Redevelopment Authority
The Tuskegee - UBT Cooperative District
Thomaston Water & Gas
Thomasville Waterworks & Sewer
Thorsby
Top of AL Regional Council of Governments - Senior Aides Division
Toxey
Trafford
Tri Community Water System
Trinity
Troy Board of Education
Troy Industrial Development Board
Trussville Fire Dept
Trussville Utility Board
Tuscumbia Housing Authority
Tuscumbia Utilities Department
Twelve Oaks Improvement District
Twin
Union
Union Grove
Union Grove Utilities
Union Springs Utility Board
Uniontown
Upper Bear Creek Water, Sewer & FPA
Valley Grande
Valley Head
Valley Head Water Works Board
Vance
Vernon
Vernon Water & Sewer Board
Vina
Vincent
Vincent Water & Sewer
Vredenburgh
Wadley
Walnut Grove
Washington County Library Board
Waterloo
Waverly
Wedowee Water, Sewer & Gas Bd.
West Alabama Regional Comm.
West Blocton
West Etowah Co. Water Authority
West Lawrence Water Cooperative
West Pace Village Cooperative Dis.
West Pace Village Improvement District
West Point
Wetumpka Water & Sewer
Wilcox County Gas
Wilsonville
Wilton
Winfield Water Works & Sewer Bd.
Winston Cooperative District
Winston County Industrial Development Authority
Wolf Creek Water, Sewer & FPA
Woodland
Woodstock
Woodville
York

Silver Awards (Loss ratio of 5% - 20%)

Adamsville
Alabama League of Municipalities
Alabaster
Albertville
Aliceville
Altoona
Andalusia
Andalusia Board Of Education
Ashland, Goodwater-Lineville Solid Waste Disposal Authority
Ashville
Atmore
Attalla
Auburn Housing Authority
Bayou La Batre Water & Sewer
Bear Creek Development Authority
Birmingham Airport Authority
Bridgeport
Calera
Camden
Camp Hill Utilities
Cedar Bluff
Clarke-Mobile County Gas District
Clay
Clayton
Coffee Springs
Coffeeville
Coosada
Cottonwood
Creola
Daphne
Dauphin Island
East Alabama Water, Sewer & Fire Protection
East Brewton Waterworks & Sewer
Elba
Evergreen
Florala
Gadsden Airport
Gardendale
Gaylesville
Graysville
Grove Hill
Gurley
Hackleburg
Hamilton
Hamilton Housing Authority
Hartford
Hayneville
Headland
Homewood
Hueytown
Irontdale
Jacksonville
Jasper
Jasper Water & Sewer
Jemison
Kimberly
Lake View
Leeds Water & Sewer
Level Plains
Lineville
Lipscomb
Locust Fork
Loxley
Marion
Millport
Mobile Airport Authority
Monroeville
Montgomery Housing Authority
Montgomery Water & Sewer Board
Moody
Moundville
Mount Vernon
Munford
Muscle Shoals

Newton
North Alabama Gas District
North Central Alabama Regional Council of Governments
Northport Housing Authority
Northwest Alabama Gas District
Oneonta
Oneonta Utilities
Opelika
Orange Beach
Orange Beach Water & Sewer Board
Oxford
Piedmont
Pine Hill
Pleasant Grove
Powell
Priceville
Ragland
Rainsville
Reform
Roanoke
Rocky Ridge Fire District
Samson
Satsuma
Scottsboro Electric Power
Scottsboro Waterworks, Sewer & Gas Board
Sheffield Utilities
Shorter
Sipsey
Smiths Station
South Alabama Regional Planning Commission
South Central Alabama Regional Housing Authority
Springville
Steele
Sulligent
Sylacauga
Tallasse
Tarrant Electric Board
Thomaston
Thomasville
USS Alabama Battleship Commission
Vestavia Hills
Wave Transit System
Weaver
Webb
Wedowee
West Escambia Utilities
West Jefferson

Bronze Awards (Loss ratio of 20% - 40%)

Albertville and Boaz Recycling & Solid Waste Disposal
Andalusia Utilities Board
Athens
Athens Utilities
Auburn
Bay Minette
Bessemer Electric and Water
Black
Blountsville
Boaz
Brilliant
Brookwood
C.C.E.M.S. - Coffee County
Emergency Management Service
Center Point
Chatom Utilities
Cherokee
Chickasaw
Childersburg
Childersburg Waterworks, Sewer & Gas

Citronelle
Columbiana
Dadeville
Daleville
Dauphin Island Water & Sewer
Decatur Housing Authority
Demopolis
East Brewton
East Central Alabama Gas District
Elberta
Elmore
Fairfield
Florala Water & Sewer Board
Fort Payne
Fultondale
Fultondale Gas Board
Gordon
Greenville
Gulf Shores
Haleyville
Haleyville Water & Sewer Board
Heflin
Hollywood
Huntsville - Huntsville Transit
Ider
Jacksonville Water Works, Gas/ Sewer
Killen
Lincoln
Luverne
Madison Utilities
Maplesville
Mobile Water & Sewer
Montevallo
Muscle Shoals Utilities
New Hope
North Central Alabama Regional Council of Governments Senior Aids
Northwest Alabama Council of Local Governments
Notasulga
Opp
Pennington
Phenix City
Phil Campbell
Rainbow City
Robertsdale
Scottsboro
Semmes
Snead
Southeast Alabama Regional Planning & Development Commission
Southeast Shelby County
Emergency Rescue
Southside
Sumiton
Tarrant City
Triana
Troy
Troy Housing Services
Tuscaloosa
Tuscumbia

**Need Help
Filing
Work Comp
Claims?**

**For step-by-step
instructions, visit**

almwcf.org

Power Line Safety

Will Strength • ARM-P • Loss Control Representative • AMIC/MWCF

Municipal employees often work in locations near power lines. Chances are high that employees who work with bucket trucks, dump trucks, ladder trucks, excavators, backhoes, scaffolds, ladders or other long reach equipment are also working dangerously close to overhead or underground power lines. Many times employees working in these situations believe they are “safe” because they don’t contact the power line. What these employees, as well as many people, fail to realize is that electricity can and will arc from the line to you or the piece of equipment you’re working with such as an excavator or ladder truck. The airspace around the power line is just as dangerous as the line itself. The safe distance away from the line is determined by the voltage of the line. The higher the voltage, the more likely it is for an arc to occur and the distance the electricity can travel is greater.

If you’re working around power lines, keep a safe distance from the lines. **If you’re not sure of the voltage, you should be at least 10 meters (33 feet) away from the lines and your equipment should be at least 6 meters (20 feet) away.** Use a spotter to make sure you’re maintaining this minimum safe distance. The spotter should stand at least 10 meters away from the vehicle in case an electrical contact occurs. **Contact with power lines carrying less than 750 volts can kill you, seriously injure you and result in loss of equipment or other property damage.**

- Before you start work, be sure you and your co-workers know where all the power lines are located **above and below** the ground. **Consider them energized and dangerous.**
- Keep at least 3 meters away from all power lines (or more, depending on the voltage see chart below).
- Call for a cable-locate before you dig to avoid contacting underground power lines.
- Call your local power provider when it’s necessary to have power lines insulated, de-energized or moved.
- Before moving ladders, rolling scaffolds or elevating work platforms, always check for overhead lines.
- Request training for working near power lines from your local power company annually.

Should you ever find yourself in a situation where your equipment has made contact with a power line, remain calm. If you make one wrong move, a serious injury or fatality is likely to occur. The equipment you are operating is now charged and the electricity is looking for a path to ground. **As long as there is not another hazardous situation that is threatening your life, it is much safer to remain in place until the line has been de-energized.**

- Remain calm and stay in place.
- Call or have someone call for help.
- Do not touch anything outside of the equipment. You might create another path to the ground for the electrical current.
- Warn others to stay at least 20 feet away from the equipment.

If it is absolutely necessary to exit the machine due to fire or other hazards, you must do so without touching the equipment and the ground at the same time.

To exit the equipment:

- **Jump as far out as possible and make sure you do not fall back against the machine.**
- **Land with both feet together and shuffle your feet a few inches at a time making sure to never break contact with the ground or cause separation between your feet.**
- **Don’t walk or run. Get to a safe area at least twenty feet or more from the equipment.**

The best protection from this type of situation is training and awareness of power lines. Contact your local power company today for training to best protect your employees.



2016 SkidCar Schedule

Through an advanced, computer-controlled driver training vehicle known as the SkidCar System, trainees learn how to react quickly and safely to a range of hazardous driving conditions. Training is conducted throughout the state at a minimal cost. Visit www.losscontrol.org for more information.

April 19-29	Phenix City	August 16-19	Huntsville
May 23-27	Eufaula	September 13-16	Muscle Shoals
June 14-24	Fayette	October 11-21	Pelham
July 12-15	Thomasville	November 10-23	Orange Beach
July 19-22	Demopolis		



Register and pay **ONLINE**
www.losscontrol.org!



Loss Control Division

P.O. Box 1270 • 535 Adams Avenue • Montgomery, AL • 36102

CHANGE SERVICE REQUESTED

Presorted Std.
 U.S. POSTAGE
PAID
 Montgomery, AL
PERMIT NO. 340

Spring Safety DVDs

- 5.049 Distractions: Behind the Wheel For Drivers
- 5.053 Landscaping Equipment: Maintenance and Safety
- 5.055 Distracted Driving: At What Cost?
- 7.026 The Facts About Ticks and Lyme Disease
- 7.105 Groundskeeping Safety: Dealing With Bugs and Critters
- 7.106 Groundskeeping Safety: Be a Pro!
- 7.108 Protecting Your Feet: Learning Your ABC's
- 7.111 Back Injury Prevention for Public Entities (TML)
- 7.115 First Aid: Prepared to Help
- 7.116 CPR and AED: The Chain of Survival
- 7.117 Hazards of Cell Phone Usage
- 7.118 Safety Procedures for Lawn Mower Operators
- 7.119 Landscape Power Tool Safety
- 7.120 Hedge Trimmer Safety
- 7.121 Video Guide to Chainsaw Safety
- 7.122 String Trimmer Safety
- 7.123 Boating Safety
- 7.128 Golf Cart & Low Speed Vehicle Safety: On & Off the Course

Video/DVD requests to: Rachel Wagner at: 334-262-2566;
rachelw@alalm.org; or FAX at 334-263-0200.

Employment Practices Law Hotline

1-800-864-5324

Through a toll-free Employment Practices Law Hotline, members can be in direct contact with an attorney specializing in employment-related issues. When faced with a potential employment situation, the hotline provides a no-cost, 30-minute consultation.

www.losscontrol.org